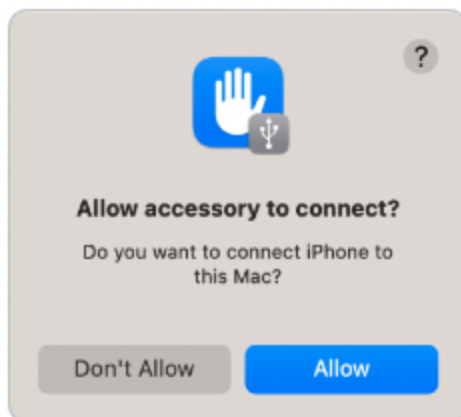


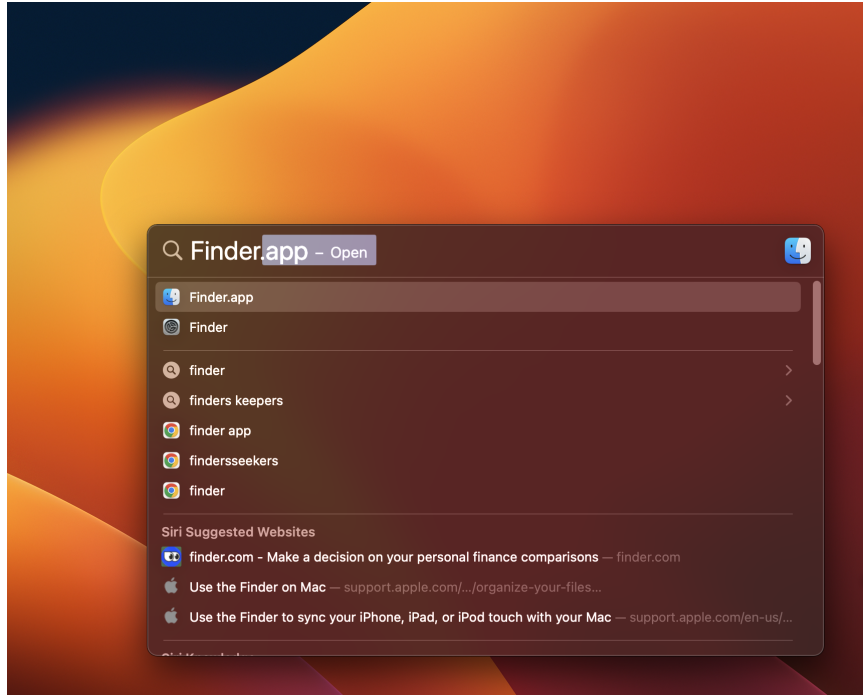
Mac Set-up for Canvia K

Notes: The below steps are suitable for Mac users that aren't able to directly access the external drives from the **Finder** application

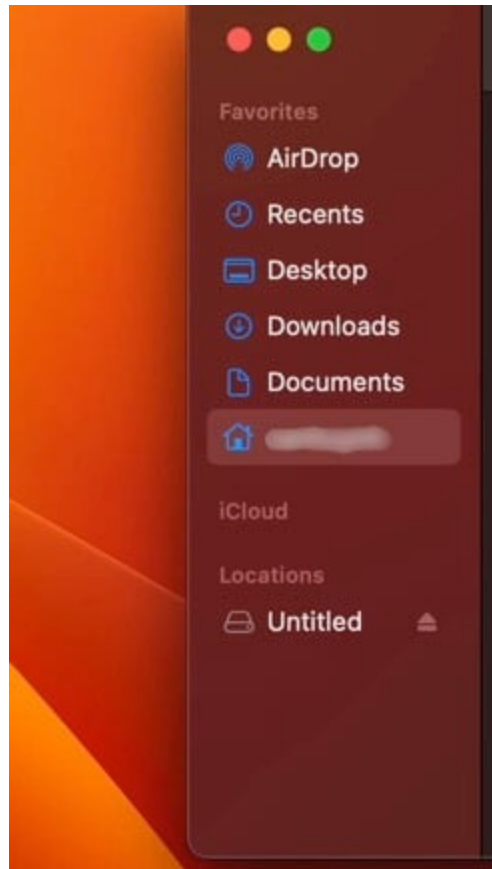
1. **Please Note!!!!:** If your Mac has only USB-C ports, you'll need a USB-C to USB-A adapter. Connect the provided cord to this adapter before continuing or contact support@canvia.art for getting the adapter.
2. Connect the Canvia K device to your Mac via the provided cord. When your Mac detects the accessory, click **Allow** to authorize the connection.



3. On your Mac, open the **Finder** application
 - a. If you are unsure, press **Command** + **Space** , then a search bar will appear on your screen. Type in **Finder** and press **Enter**

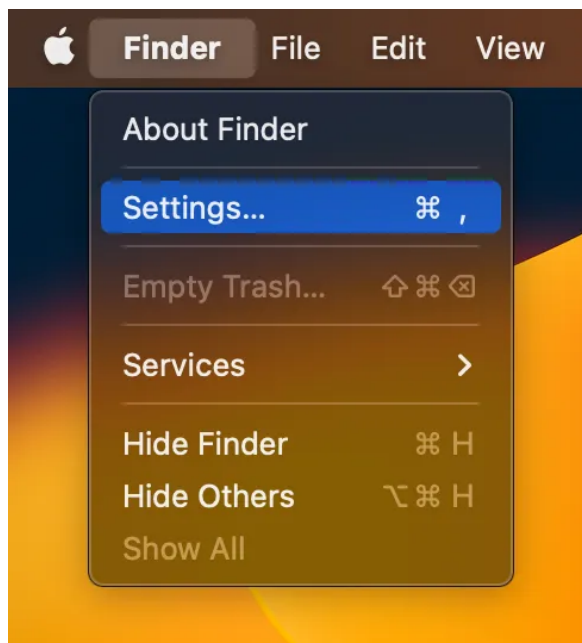


4. Once you open the **Finder** application, check if you see the **Untitled** drive on left sidebar under **Locations** section this should be the drive for you to upload **Photo** , **Video** and **Music** to the Canvia K device. Enjoy!

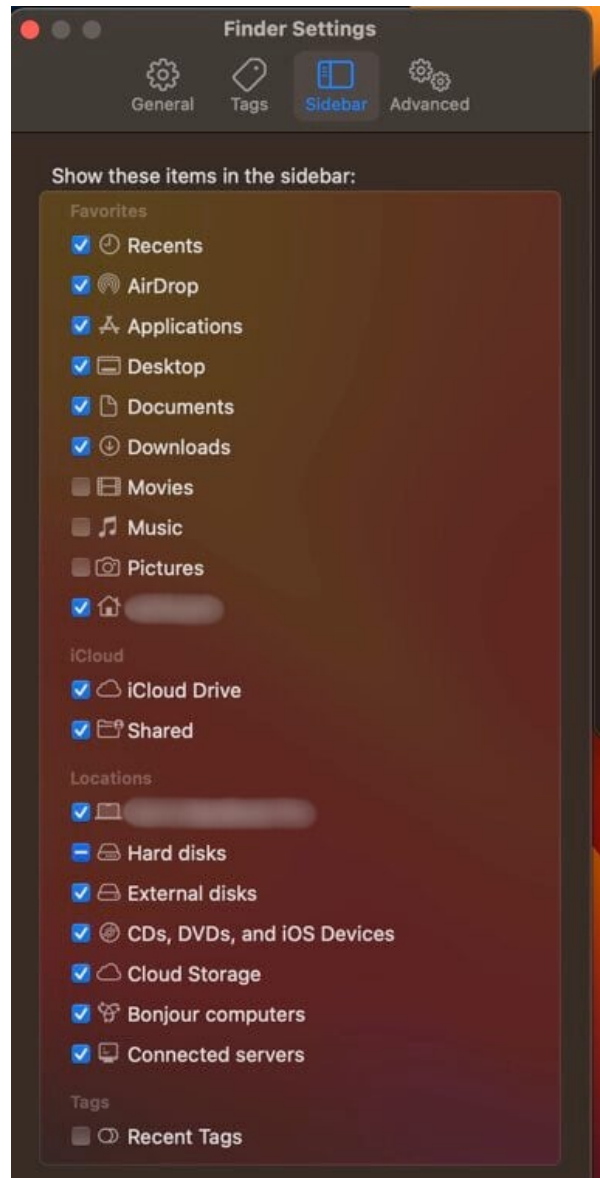


5. If you are not able to find the above drive, at the Apple Menu bar, click on

Finder > **Settings**



6. A menu will pop up, in the **General** tab and **Sidebar** tab, make sure you have the **External disks** item ticked



6. Go back to the **Finder** application you should expect to see similar result as step 3